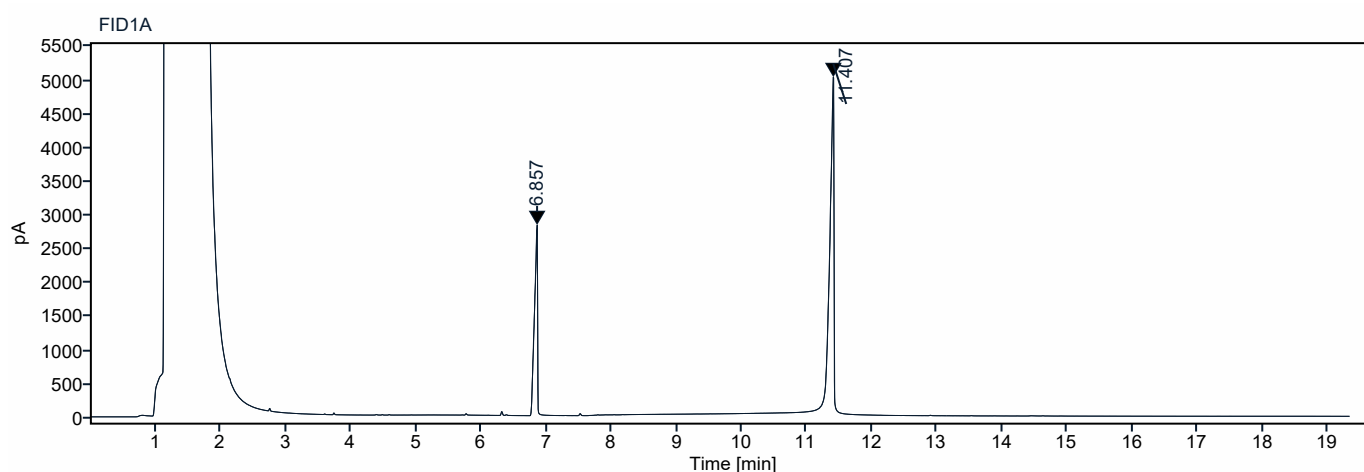


Single Injection Report



Data file: 161.3.dx
Sequence Name: SingleSample
Sample name: 161.3
Instrument: GC1
Inj. volume: 1.000 µL
Acq. method: PRH 40-300 15DM.amx
Processing method: GC_LC Area
Percent_DefaultMethod_Liam
Edit.pmx
Manually modified: Manual Integration

Project Name: Cosgrove lab
Operator: AdminGC1 (Admin)
Injection date: 2025-05-13 18:54:15+01:00
Location: 113
Type: Sample
Sample amount: 0.00



Signal: FID1A

RT [min]	Type	Width [min]	Area	Height	Area%	Name
6.857	BM m	0.15	9179.74	2821.78	29.14	
11.407	MM m	0.24	22324.11	5015.45	70.86	
		Sum	31503.85			